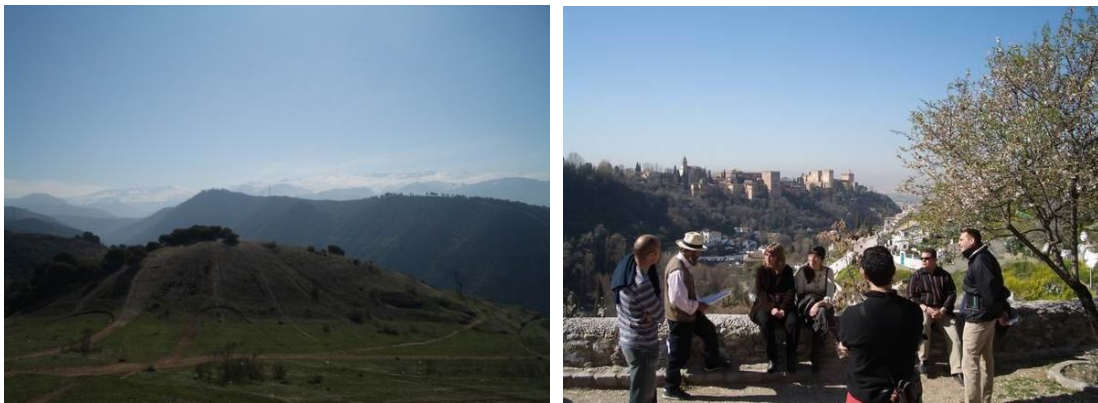


GRANADA ARABIC & GYPSY VISIT
ESTIMATED VISIT TIME 3 HOURS

Visit of great visual impacts in Sacromonte and Albayzín Quarters

From the highest point of the city, viewing the Sierra Nevada mountain range, we walk through a pine forest starting a short hill walking route of 15 minutes until we reach the Sacromonte Quarter.

A Poet welcomes us and recites the first poem of Granada and the Alhambra.



The Sacromonte constitutes the Gypsy Culture District and has produced many of the past and present flamenco greats; there, we will be captivated by the singularity of the Cave houses, the gypsy charm, the flamenco guitar, the traditional handcrafts, the poetry and the fabulous views of the Alhambra.



We continue come into the Albayzin, the Arabic District, that was declared a World Heritage Site in 1984. To take a walk by Albayzin is to make a trip to its moorish roots as well as a pleasure for our five senses.

We will cross its most emblematic corners, their labyrinth of narrow streets perfumed of jasmine, discovering its traditional bakeries, architecture, view points, fountains, traditional cobbled streets, and the multiethnic atmosphere of this district.

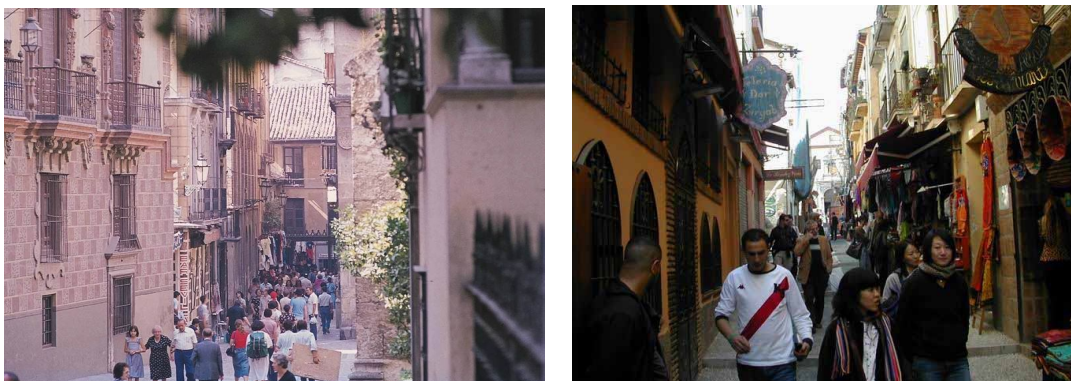
Our itinerary includes a visit to a bakery where we can see the traditional way of preparing the bread while tasting some cakes accompanied by an Arab tea.



We will continue visiting Larga Square, center of Albayzín and El Mirador de San Nicolas, one of the most breathtaking views of the Alhambra in Granada ending with a typical “tapas” lunch in one of its most famous Restaurants.

Once finalized the lunch we continue until we reach the Calderería (Moorish Market) where its smells, winding streets, teashops and shops take us to the Moorish and Jewish Cultural roots of Granada.

We now reach the magnificent Plaza Nueva, where the Moorish-Christian and Renaissance architecture coexists, and where our visit ends.



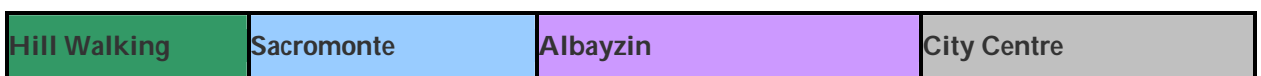
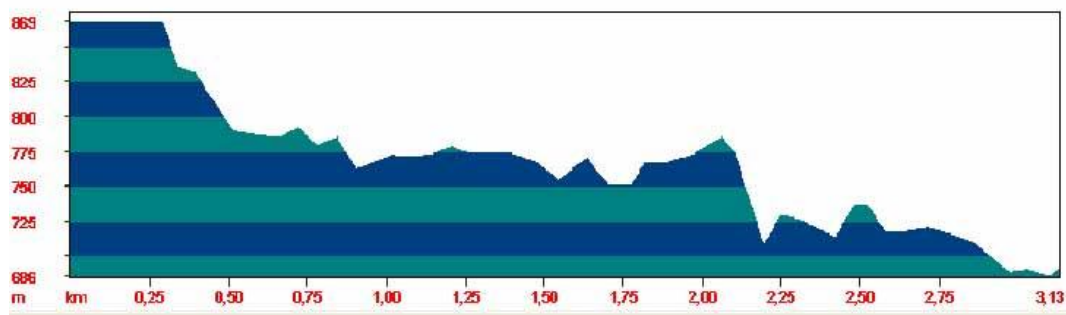
This product lays its basis on the new trends of Cultural Tourism; a type of tourism that each day demands the clients direct participation on discovering a different culture

We have formed this product thinking about being able to adapt it to all type of groups and with the aim to make known in depth Sacromonte and Albayzin districts and the old part of town as well as the mix of cultures (moorish, jewish, christian and gipsy) that compose the Granada history.

With this objective we have put together into an only one visit:

- High visual Impact Geological view points.
- 15" Hill Walking route through the woods.
- Romancero – Narration of traditional Poems.
- Cave Interpretation Centre
- Spanish Guitar
- Refreshment in the Sacromonte District
- Hand reading
- Interpretation of the Albayzín Districts layout.
- View Points
- Traditional bakery, tasting of Moorish tea and pastries.
- Moorish market (Calderería)
- Renaissance city (Plaza Nueva)

Route Profile



3.130 meters of descending route.
35 minutes walking without stop at 6 km/hr

Price per person: 75,00 €

This price includes:

- **Transfer in luxury bus from hotel San Anton to the startin point of the visit**
- **Guided Visit**
- **Typical Tapas Lunch with drinks included in a restaurant in the Albayzín quarter**

REMARKS: This activity will be confirmed by a minimun of 11 people

To request this activity please contact to secretaria@economiapublica.es